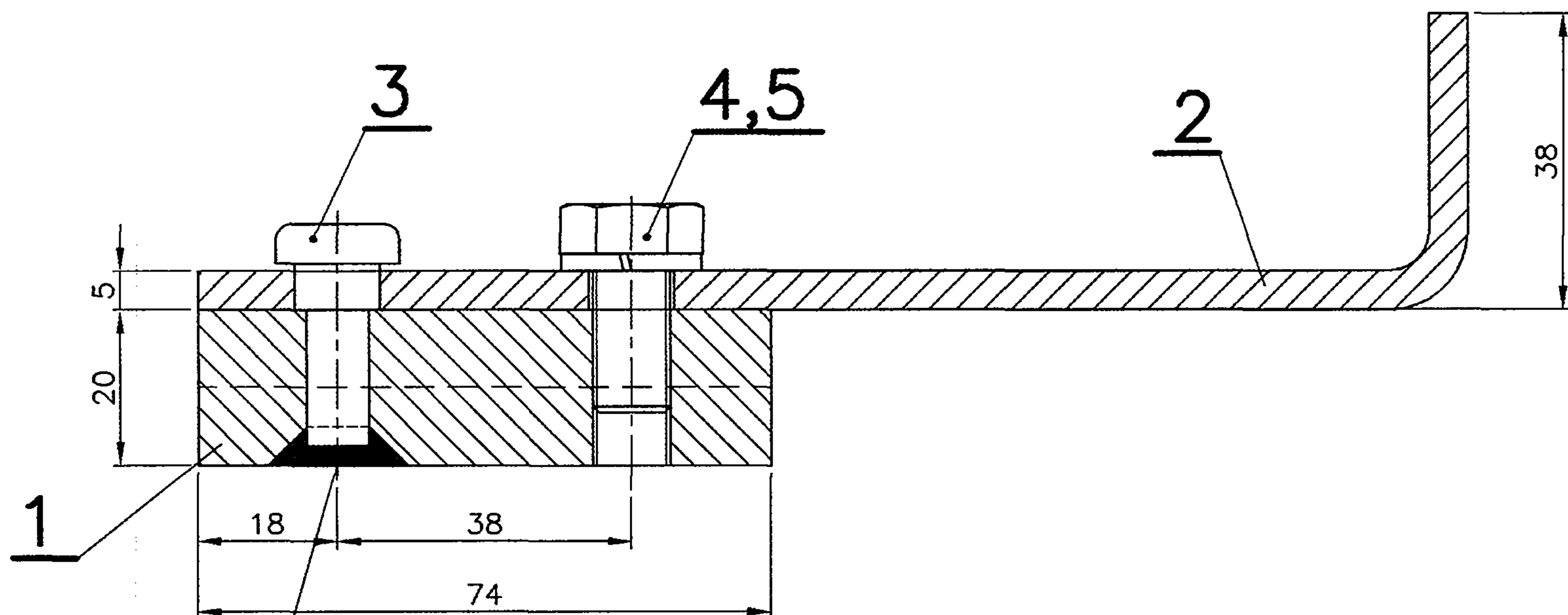


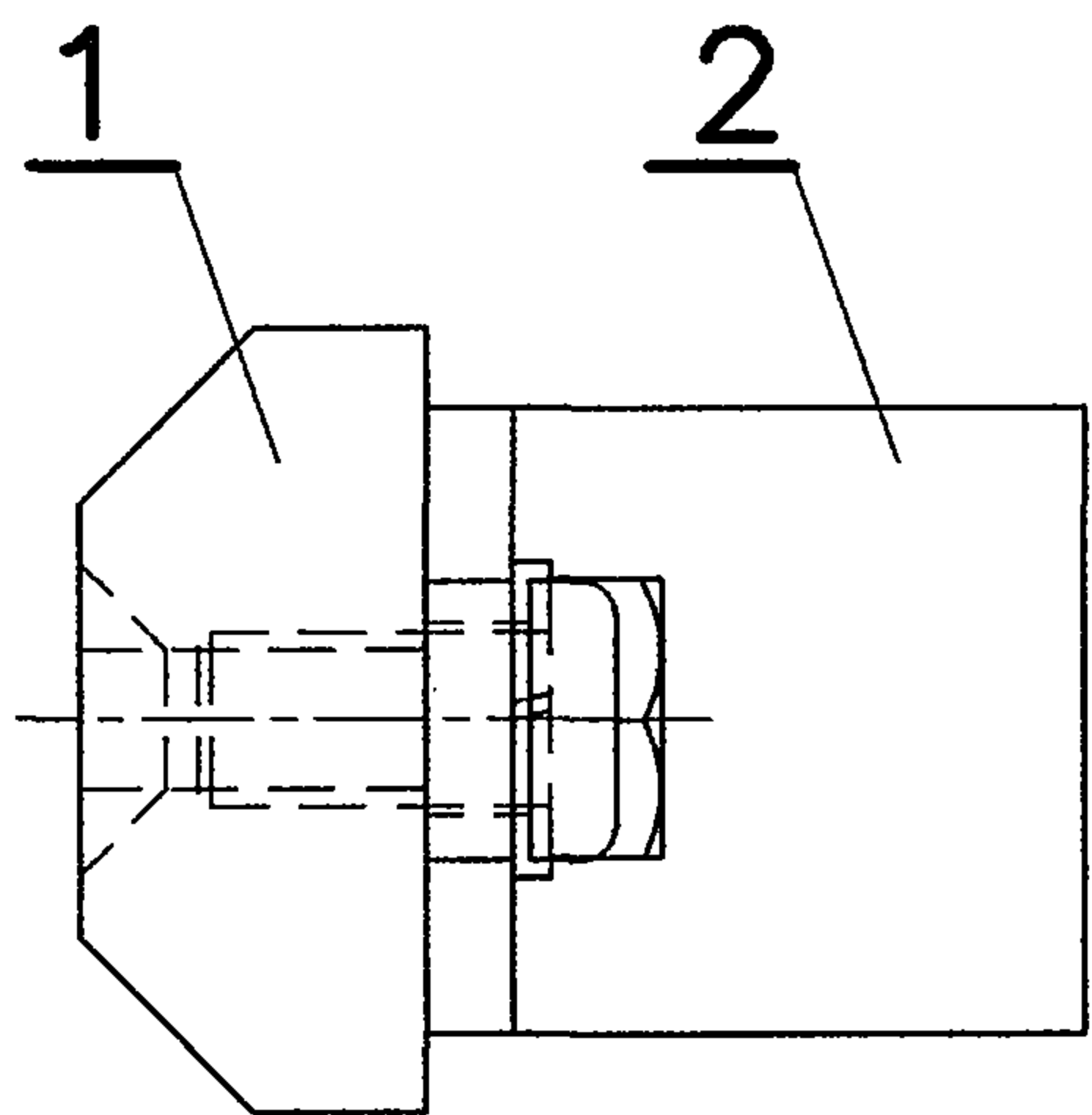
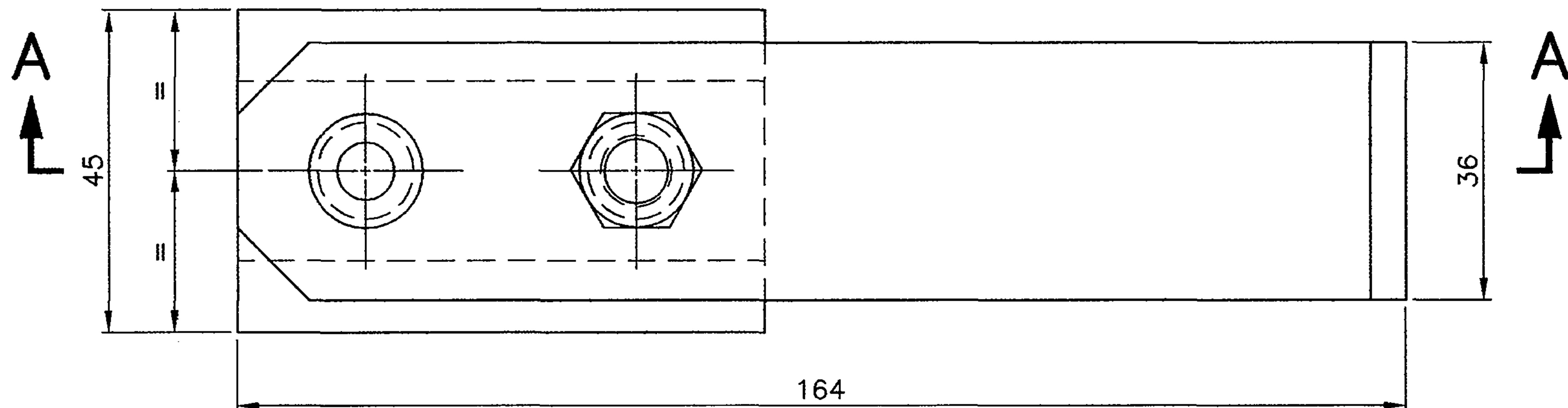


ALT.	DATE	CHANGE	BY	APPD	▽ ROUGH MACHINED	① ROUGH CLEANED	ALTERATIONS
ALT. 1	19.05.11	ICF LATEST DRG. RELEASED. ECN NO. 90600556	S.M	N.S.C	▽▽ FINISH MACHINED	② CHAMFERED	① 10/2007
					▽▽▽ FINE FINISH MACHINED	③ BURRS REMOVED	FOR ITEM-2 DIM.177 ALTD. TO 164 AS PER DETAIL. MAT. SPEC. FOR ITEM-4 & 5 UPDATED.
							SSE/D AME/D



PIN SHALL BE WELDED IN POSITION
AND GROUND FLUSH

SECTION-AA



NOTE

- FOR UNTOLERANCED DIMENSIONS REFER DRG.NO.ICF/STD-9-0-001
- FINISHED COMPONENT SHALL BE THOROUGHLY CLEANED AND APPLIED WITH TWO COATS OF RED OXIDE ZINC CHROMATE PRIMER TO IS:2074/92 TO A DFT OF MINIMUM 35 MICRONS WITH SMOOTH & MATT FINISH. THREADED PORTIONS SHALL BE TREATED WITH RUST PREVENTION OIL.
- ALTERNATIVELY STEEL TO IS:2062-Fe.410 WC MAY BE USED IN LIEU OF STEEL TO IRS M41/IS:2062-Fe.410 CuWC, WHEREVER SPECIFIED PERTAINING TO THIS DRAWING.

NO. OF ASSY. REQUIRED PER COACH

TYPE OF COACH	COLS.	I
▲ ALL TYPES OF 20.32 t BOGIES		8

NO.OFF	DESCRIPTION & DIMENSIONS	ITEM	REF. DRG.	MAT.& SPEC	WEIGHT/UNIT	REMARKS
1	SPRING LOCK WASHER B10	5	IS:3063-72 TAB.1 TYPE B	IS:4072-75 GRADE 3	RFW0911022	GALVD.
1	HEX.HEAD SCREW M10x16-4.6	4	8.8 IS:1364(P2) 92 TAB. 1&2	CFS0121016	0.026 kg	GALVD.
1	PIN	3	DMU/DPC5 0-3-510		0.019 kg	ITEM-4
1	PLATE	2	DMU/DPC5 0-3-512		0.279 kg	ITEM-2
1	PLATE	1	DMU/DPC5 0-3-512		0.443 kg	ITEM-1
GROUP: BOGIE FRAME ARRANGEMENT (0-3)						SUPERSEDED BY SUPERSEDES DMU/DPC5-0-3-511 ALT.NIL
STOPPER ASSY. FOR PIN FOR BRAKE BLOCK HANGER BRACKET ON SIDE FRAME						SCALE 1:1 SSE/D CHD ALT DRN R. Muralidhar
CAD FILE: C:\MD-CAD\199\0-3\511-SA00.DWG						ALT. a
DATA CODE NO. 199						INDIAN RAILWAY STANDARDS
SHEET 1 OF 1						DMU/DPC5-0-3-511
FORM IR A2 600x420						

DMU/DPC-0-3-009	AC/DC EMU/M2-0-3-201	DMU/DPC5-0-3-501	ASSEMBLY DRAWINGS
9-10-07	28.09.04		
ALT.	DATE OF LATEST ALTN	DATE OF FIRST ISSUE	AME/D